

Standard 8



Recognising & Responding to Acute Deterioration



Accreditation Summary 2022

Deteriorating Patient Governance Committee



Presentation Outline

Governance of Standard 8

Integrating Clinical Governance into our Practice

Applying Quality Improvement Initiatives

Recognising Acute Deterioration

Escalating Care

Responding to Acute Deterioration

Partnering with Consumers

Current Focus

Operates under the authority of Monash Health Executive Committee

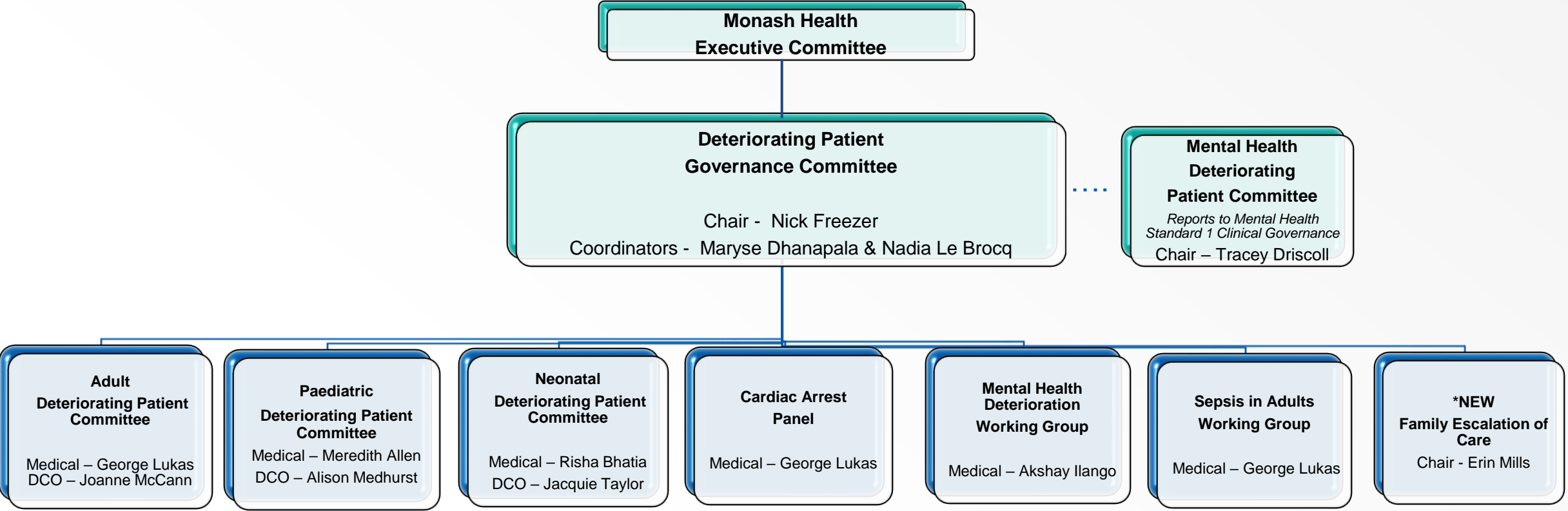
Ensures clinicians use clinical governance systems to improve the safety and quality of health care for patients

Provides governance to establish and support organisational standards for the recognition of physiological and mental state deterioration and the escalation of care, including family initiated escalation of care

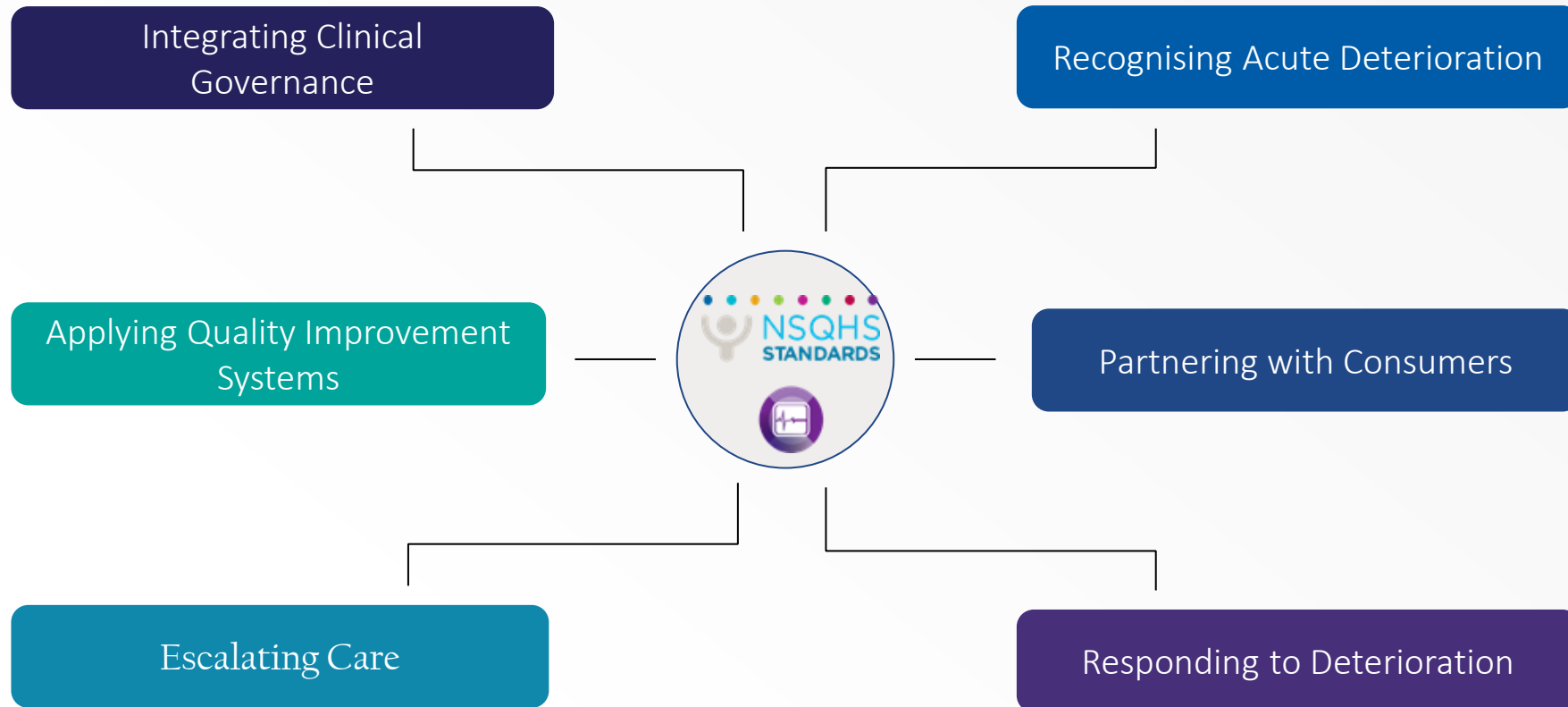
Monitor organisational performance against the NSQHS Standard 8

Governance Committee

Governance Structure



National Safety and Quality Health Service Standards





Legend	
Plan	■
Do	■
Review	■

Showcase

Newborn Medication Book

External Code Blue Procedure

Mental Health Update

Organisational Surveys

Point of Return Workshop

Paediatric Sepsis

Family Escalation of Care

Adult Sepsis

Goals of Care

Ascom/Draeger Integration

Consumer Participation

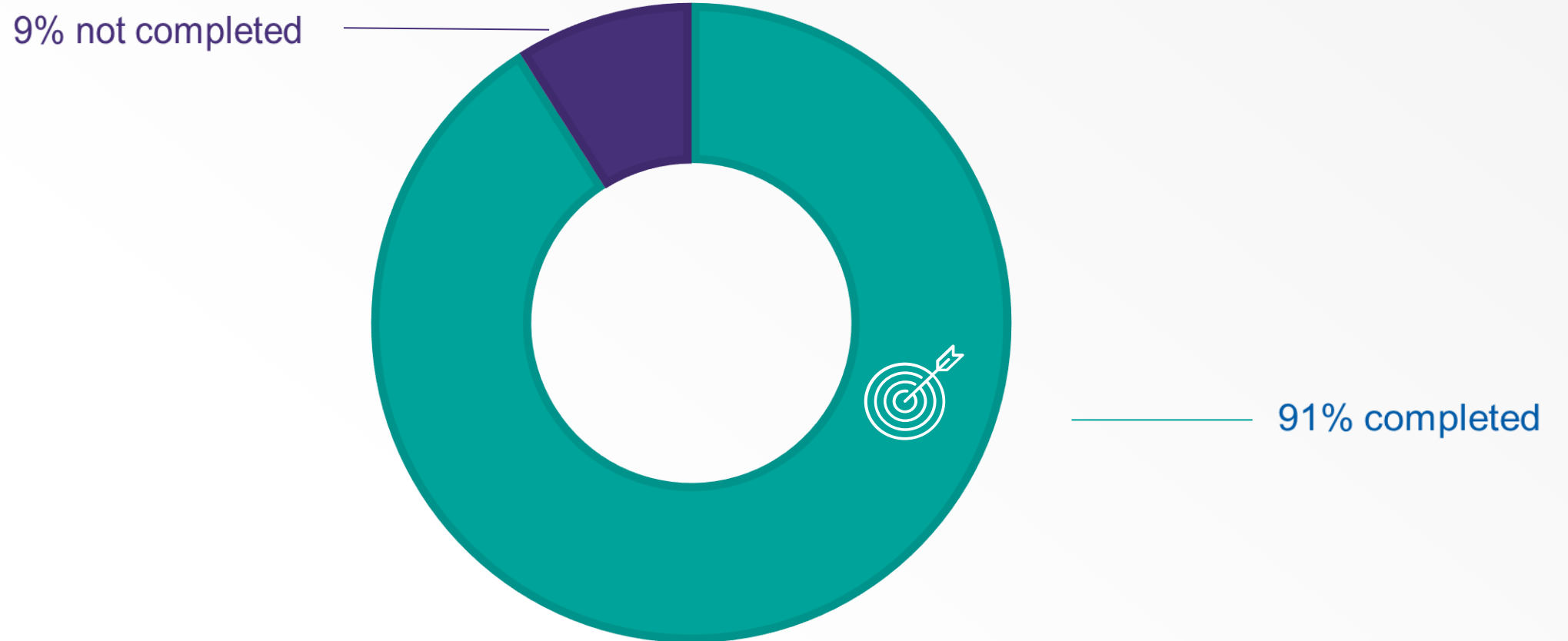
Standardising Communication Systems



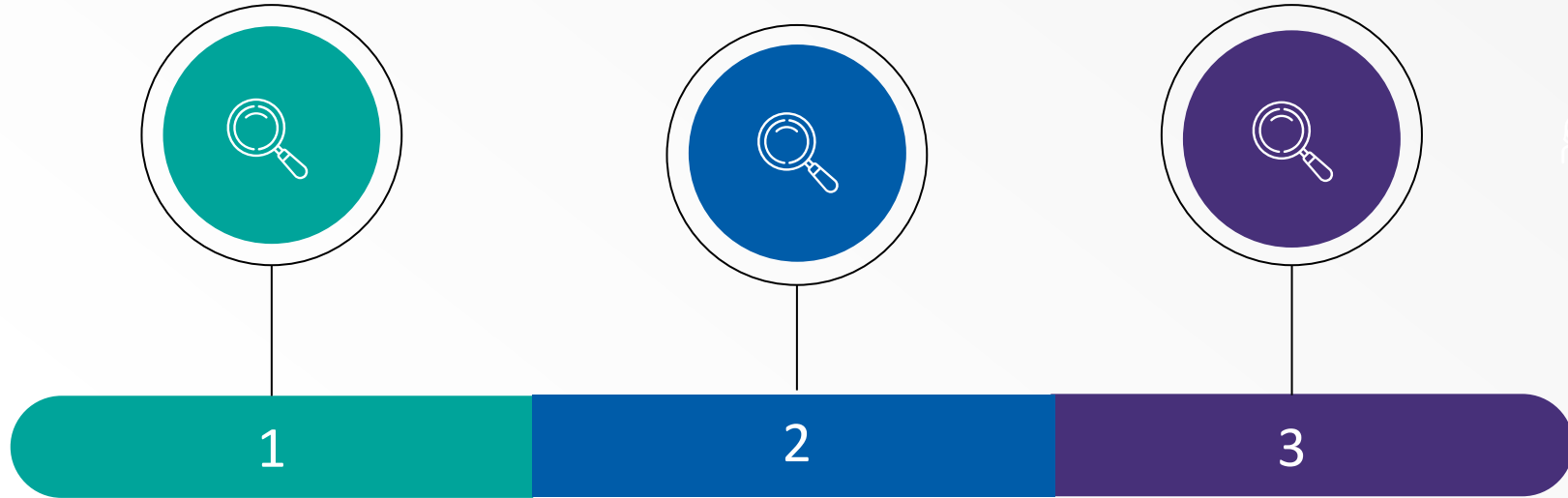
Standard 8 Targeted Training

21/9/22

BLS COMPLETION



Focus Areas



Development of
the
Deteriorating
Patient
Dashboard

Rollout of the
EMR MET/Code
Blue PowerForm

Family
Escalation of
Care



Feedback

SCV child
deterioration project
good

Emergency
departments are
providing excellent
care

Family escalation of
care –
conversations
aligned with
protocol

Mental Health and
well being
component in CCP
is good

Ward 42 (Covid)
Complex clinical
environment – MET
calls managed
extremely well

ICU – excellent
clinical standards

Simulation training
and communication
skills in critical
scenarios are
excellent

